

# More convenient, more intelligent

## 80mm Thermal Receipt Printer

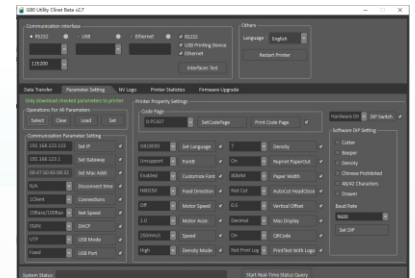
### GA-S300



★ Designed with compact size and attractive appearance, featuring with 250mm/s high print speed, together with excellent 2D barcode printing ability.



★ Built-in LED display supports easy printer set up, including print speed, print density, baud-rate and more



★ New utility to view print length, number of cuts and more  
★ Allow users to upgrade printer firmware



## Specification

|                            |                     |  |
|----------------------------|---------------------|--|
| <b>Model</b>               | Model               | GA-S300  |
|                            | Print Method        | Direct thermal line  |
|                            | Print Width         | 64mm/72mm  |
|                            | Dot pitch           | 504 dots/576dots/line  |
|                            | Print Speed         | 250mm/s  |
|                            | Interface           | Serial+USB+Ethernet  |
|                            | Paper roll          | 85mm   |
|                            | LED                 | 1.3 inch   |
|                            | Line spacing        | 3.75mm Support commands to adjust line spacing   |
| <b>Barcode character</b>   | Character size      | ANK Character Font A 1.5×3.0mm 12×24dots<br>Font B 1.1×2.1mm 9×17dots<br>Chinese 3.0×3.0mm(24×24dots)  |
|                            | Code page           | PC437/Katakana/PC850/PC860/PC863/PC865/West Europe/Greek/<br>Hebrew/East Europe/Iran/WPC1252/PC866/PC852/PC858/Iran II/<br>Latvian/Arabic/PT151,1251/PC737/WPC/1257/Thai Vietnam/PC864/<br>PC1001/(Latvian)/(PC1001)/(PT151,1251)/(WPC1257)/(PC864)/<br>(Vietnam)/(Thai) |
|                            | Barcode type        | UPC-A/UPC-E/JAN13(EAN13)/JAN8(EAN8)CODE39/ITF/CODABAR/<br>CODE93/CODE128/QRCODE  |
| <b>Buffer</b>              | Fonts               | GBK / BIG5 / GB2312  |
|                            | Data                | 128K bytes   |
|                            | NV Flash            | 256 bytes  |
| <b>Power</b>               | Cashdrawer out      | DC 24/1A   |
|                            | Power supply        | DC 24/2.5A   |
|                            | Power adapter       | Input: AC 110V/220V 50 ~ 60Hz<br>Output: DC 24V/2.5A   |
| <b>Physical properties</b> | Weight              | 1.23KG   |
|                            | Dimensions          | 160*132*123mm  |
| <b>Environment</b>         | Work Temperature    | Temperature:0~45°C, Dampness:10 ~ 80%  |
|                            | Storage Temperature | Temperature:-10~60°C, Dampness:10 ~ 90%  |
| <b>Auto cutter</b>         | Mechanism           | 150km  |
|                            | Auto cutter         | 1.5 million cuts   |

## PRODUCT HIGHLIGHTS

- ★ 1.3 inch LED display easy printer set
- ★ Built-in loudspeaker ideal for noisy environment
- ★ Multiple interfaces



Gainscha Network Inc.

Tel: +86 756 3965698 Fax: +86 756 3965694 E-mail: sales@gainscha.com

www.gainscha.com.tw | gainscha.com