

APEX cutter installation

操作步骤 User Guide



By Allen , January 17,2022

Installation instructions

一. Installation needs:

1. Apex printer
2. Phillips screwdriver
3. slicer

二. Installation process:

1. Removing screws.



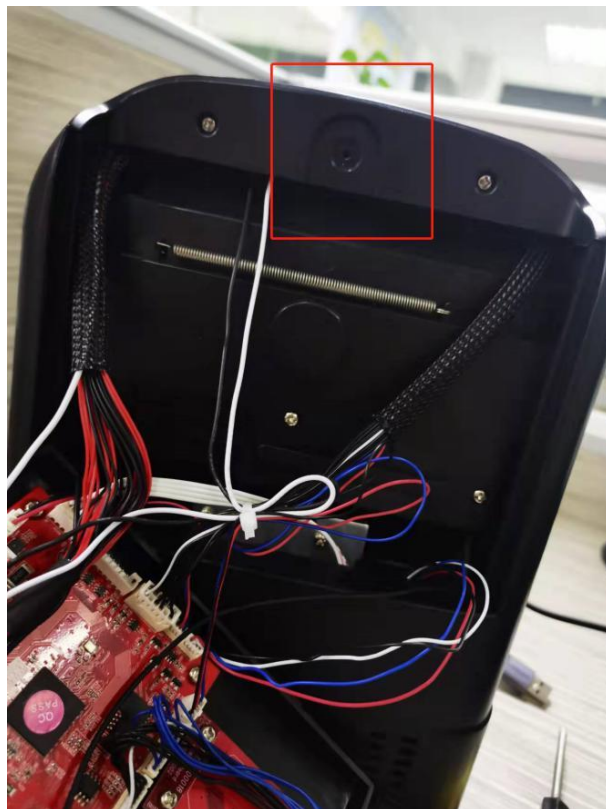
2. Lift the baffle up and remove the baffle.



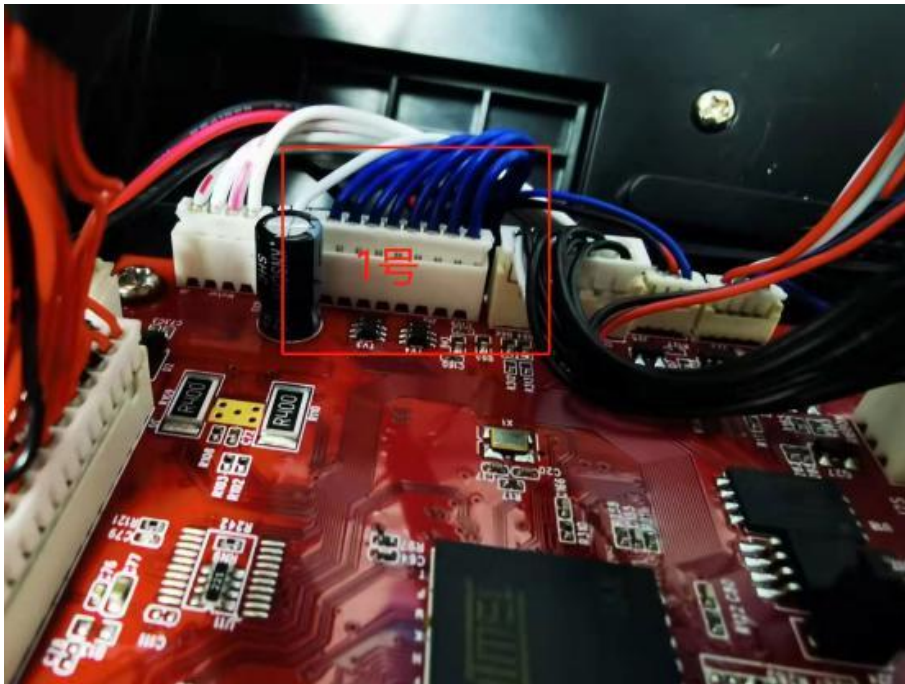
3. The cutter line end is inserted into the hole



4. Remove rear housing screws.



5. Locate the wire connector for the cutter and insert Mark Position 1.



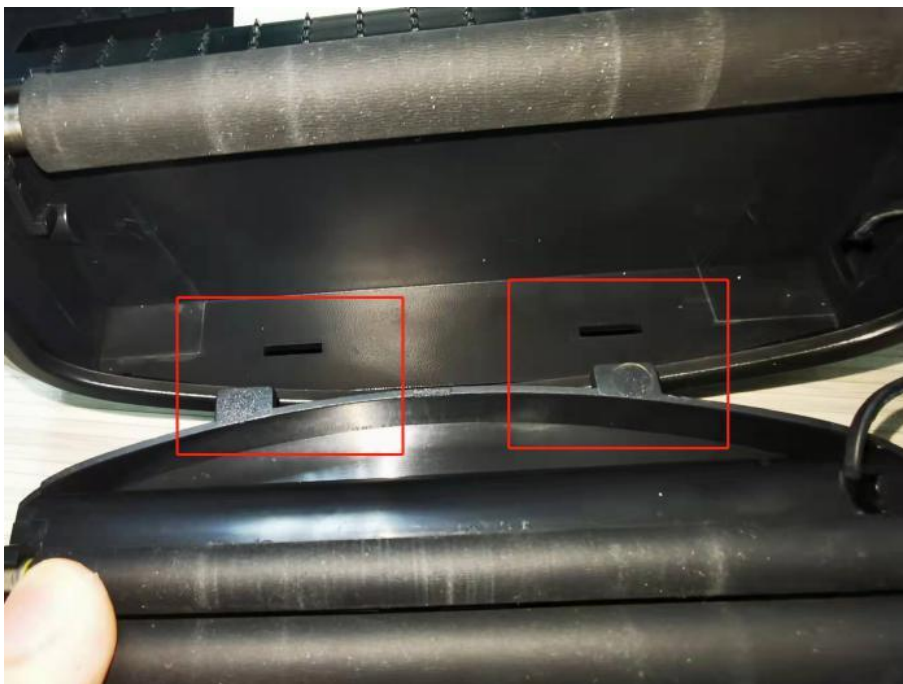
6. Install the rear housing of the printer motherboard.



7. The rear bottom shell makes a crisp sound and then install the bottom shell screws as shown below.



8. Card the bump at the bottom of the knife into the groove below



9. From top to bottom, make the cutting knife successfully installed in place.

10. The screw hole of the cutter is stuck into the card slot and install the screws.



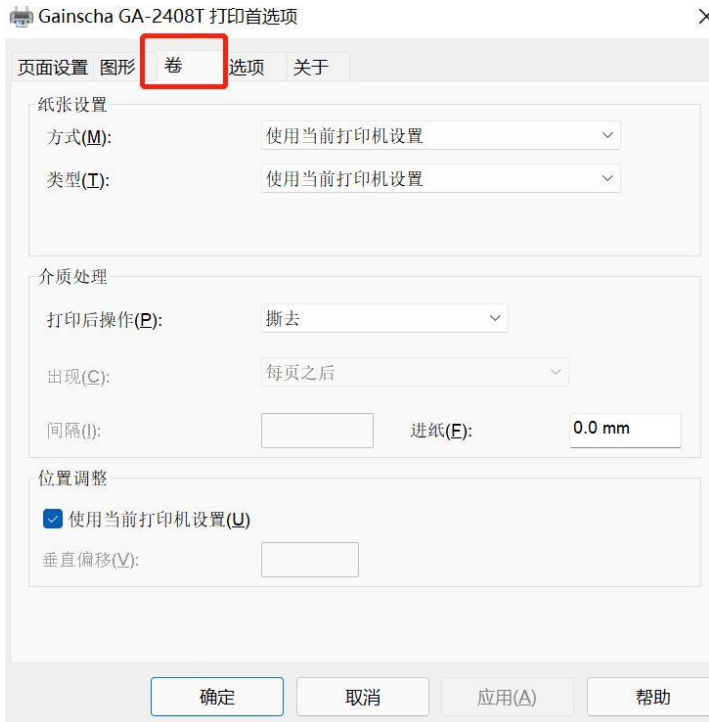
11. The label passes through the cutter interior as shown below.



12. Cover the printer cover to energize the printer and connect the USB to the computer. Open Control Panel —> Device & Printers —> Find the corresponding printer model Right-click —> Select Print Preferences.



13. Select Volume in Fig.



14. Click Post-Print Action — — > to select Cut and click OK.



15. Check that the cutter is successfully installed. Open BarTender and click the icon in the top right corner to print the image below.



16. Select the corresponding printer model, select Open Properties, Volume and click on the frame in the drawing, select Use Current Printer settings and determine OK in the following figure.



17. Open the previous print page and click "Print" to see if the machine is cutting paper.

18. Apex cutter installation instructions complete. Thanks.